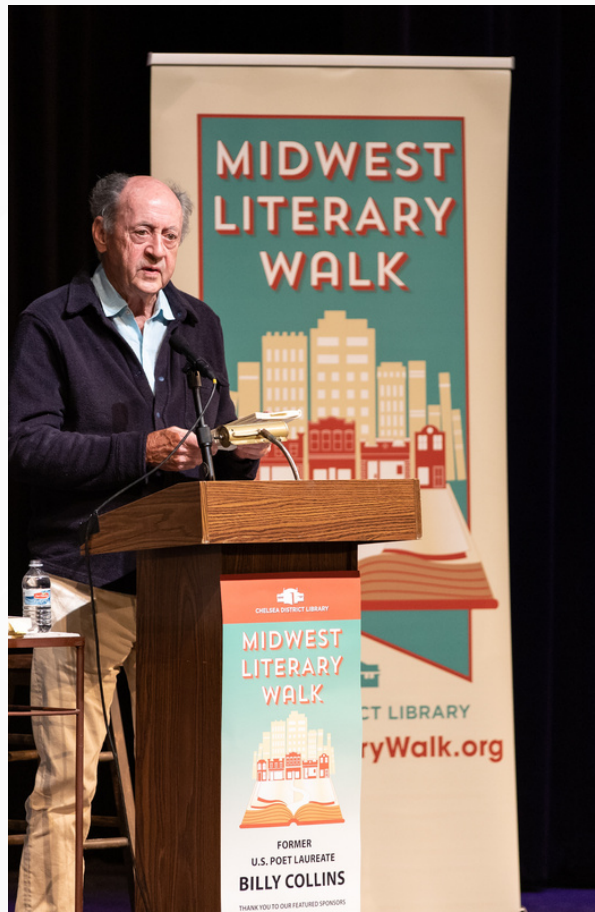




CHELSEA DISTRICT LIBRARY

ENGAGE. INSPIRE. EQUIP.



2022

ANNUAL REPORT

ABOUT US

Chelsea District Library (CDL) is a not-for-profit organization whose mission is to Engage, Inspire, and Equip through evolving services and resources. CDL currently serves 16,126 residents in the Chelsea library district—City of Chelsea, Lyndon and Sylvan Townships, and the portions of Lima and Dexter Townships within the Chelsea School District.

CDL is an access point for the internet and information including: books, magazines, DVDs, CDs, audiobooks, e-books, streaming content, subscription databases, toys & tools in the CDL Garage, and the Ingenuity Engine (a creative makerspace). As a community gathering place, Chelsea District Library strives to present timely, interesting, and high-quality programs and events to educate, entertain, and enrich the Chelsea community, schools, and stakeholders.

Chelsea District Library operates with the following core values:

- Equal, uncensored access
- High quality resources
- A safe, secure environment for all library visitors
- Privacy and confidentiality
- Fiscal integrity and accountability
- Free exchange of ideas
- Inclusion and respect
- High ethical and professional standards
- Superior customer service

TABLE OF CONTENTS

DIRECTOR'S MESSAGE.....2

STRATEGIC PLAN PROGRESS.....3

2022 FINANCIAL STATEMENT....4

2022 HIGHLIGHTS.....5-8

GRANTS AND DONATIONS.....9



DIRECTOR'S MESSAGE

2022 saw a return to pre-COVID operations. We were open to the public for the full year, and in-person programming returned, alongside the popular virtual programs established in 2020–21. Our 2020–23 Strategic Plan focuses on library access—as expected, with increased access to the building, we saw an increase in physical materials circulated. We observed that as people’s habits changed during the pandemic (and technology advances), the trend of increased circulation of e-content continued to rise.

A library’s ultimate goal in its programming and collection is to reflect the diverse world in which we live. Through stories, music, art, literature, and more, a visit to the local library can take you all over the world and beyond. Highlights of 2022 programming included an Artist-in-Residency with former U.S. Poet Laureate Billy Collins. Collins also appeared in the Midwest Literary Walk along with acclaimed authors Don Winslow and Ashley C. Ford. Our Authors in Chelsea program (where authors visit local Chelsea classrooms) featured Theanne Griffith, James Buckley, Jr., and Katherine Arden. Performing artists Tommy Stinson headlined the CDL Song Fest and Maddalena Giacomuzzi dazzled our audience at Music in the Air.

To combat the gray days of Michigan winter, the library hosted Frida Kahlo's Garden, a nationally touring exhibition from the National Endowment for the Arts. The exhibition took over the entire library with an explosion of color, flora, and fauna. Patrons enjoyed photos, displays, and interactive stations of Frida Kahlo’s gardens, her home, art studio, and the influences that impacted her life and art.

The Ingenuity Engine—our Makerspace—continues to expand its classes and equipment. In partnership with a local quilting group, the Ingenuity Engine staff worked with stakeholders in the community to produce a lovely collaborative quilt currently on display in the stairway leading to the library’s second floor. This project took endless hours of instruction, fabric selection, and sewing and resulted in an extraordinary piece of public art for our entire community to enjoy.

Finally, in our pursuit of making the library accessible to all, work on Mobile CDL—our library outreach vehicle—began in earnest this year. Mobile CDL aims to overcome barriers to library service by providing flexible and convenient access to all the library has to offer including connection to resources, services, ideas, technology, and each other. Early in the year, we released a Request for Proposal (RFP) for the design, build, and delivery of the vehicle, which was subsequently awarded to TechOps Specialty Vehicles. The RFP called for creative, flexible, forward-looking solutions to produce a modern, eco-friendly, and ADA accessible vehicle.

Our community rose to support this effort with grants and donations. To help fund the vehicle, CDL received grants from the Chelsea Community Foundation (\$25,000) and T-Mobile (\$47,400), as well as contributions from the Chelsea Rotary (\$5,000), Green Tree Pediatrics (\$5,000), and Chelsea State Bank (\$25,000). Our Friends group raised more than \$9,000 for the vehicle. Other donations brought in more than \$15,000.

The library's recognition as the Chelsea Chamber of Commerce 2021 Nonprofit Business of the Year showcased the community's support and filled us with gratitude. As we enter the new year, we are eager to build upon the momentum gained in 2022.

Lori Coryell



STRATEGIC PLAN PROGRESS

CDL 2020–2023 Strategic Plan: Facilitating Access

What exactly does the Library provide access too? Hint, it's much more than books! Defining access for the CDL begins with defining the purpose of the Library which one supporter described as "a gateway to information and entertainment for the entire community." With that purpose in mind, access includes:

**Physical Access • Remote Access • Access to Shared Resources
Access to the World • Mutual Access through Partnerships • Feeling Welcome**

Access to the Library means access to knowledge, resources, business opportunities, cultural experiences, and connections to each other.



The most significant expansion of library access in 2022 was the CDL Board of Directors approval for the purchase of a library outreach vehicle, Mobile CDL, to expand access to library services. The mission of Mobile CDL is to provide quality library service to residents in the CDL service area by reducing barriers due to geography and/or circumstance. CDL is committed to Mobile CDL serving as an effective extension of the library by providing library materials, resources, programs, and personal services to communities, neighborhoods, and individuals.

Additional improvements to library access included:

- Improved welcome email series to familiarize new cardholders with the library and its services
- Chelsea School tours and orientations with 6th grade students
- Increased board member visibility and participation in library events
- Simplified library card registration and renewal online
- Improved signage in youth nonfiction collection to increase discovery
- Additional communication of online resources via CDL eNewsletters



KEY FINANCIAL DATA

2022 Audited Financial Statement		
<i>Fiscal year January 1–December 31, 2022</i>		
Revenue	General Fund	Debt Service
Property Taxes	\$1,988,951	\$594,586
State Aid	\$15,849	
Local Community Stabilization	\$57,290	\$16,558
Penal Fines	\$15,221	
Fines & Fees	\$7,561	
Interest Income	-\$30,848	
Donations, Grants & Friends	\$170,092	
Total Revenue	\$2,224,116	\$611,144
Expenditures	General Fund	Debt Service
Personnel	\$1,232,955	
Collections	\$164,880	
Programming	\$93,545	
Board Expenses	\$2,737	
Capital Outlay	\$131,649	
Maintenance Service & Contracts	\$158,538	
Professional Fees & insurance	\$68,491	
Continuing Education	\$17,144	
Promotion	\$62,697	
Telecommunications	\$28,336	
Supplies	\$25,059	
Volunteer Services	\$1,911	
Automation	\$43,446	
Utilities	\$68,518	
Bond Interest & Principal		\$658,667
Total Expenditures	\$2,099,906	\$658,667
Community Foundation of Southeast Michigan Endowment		
Assets		
Balance as of 1-1-22	\$88,085	
Contributions	\$1,950	
Investment earnings	-\$9,950	
Balance as of 12-31-22	\$80,085	
Fund Balances		
	General Fund	Debt Service
Nonspendable/Prepaid Items	\$133,811	
Committed Capital Improvements	\$100,000	
Committed capital Reserve Fund	\$885,800	
Unassigned	\$745,507	
Total General Fund Balance	\$1,865,118	\$206,282

HIGHLIGHTS



WHAT YOU SAID



“
Beautiful library that's vibrant and in the heart of the city. A treasure.
~Kyle N.
”



MIDWEST LITERARY WALK

“
Thank you for this exceptional experience today
~Mikki
re. Midwest Literary Walk
”



“
Just wanted to tell you that the boys had an absolute blast at the summer reading kickoff party today! They're still talking about the bubbles and ice cream, and they keep asking when we'll be back for more books. What a great way to kick off our summer vacation! Thanks for all you do!
Cheri
”



FRIDA KAHLO'S Garden

“
I do truly value the library's ability to bring cool exhibits like this to our little town. Thank you. ~Jacquelyn via Facebook
”



LET THE NUMBERS TELL THE STORY!



5,673 CARDHOLDERS
(+86 FROM 2021)



112,903 LIBRARY VISITS
(+55% FROM 2021)



3,349 ENEWS SUBSCRIBERS
(+449 IN 2022)



42,526 WEBSITE VISITORS
(+13% FROM 2021)



369 PROGRAMS OFFERED



212,587 PHYSICAL ITEMS CIRCULATED
(+50% FROM 2021)



11,131 DATABASES ACCESSED



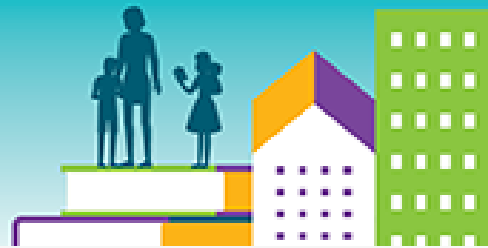
12,725 PROGRAM ATTENDEES



72,510 DIGITAL ITEMS CIRCULATED
(+52% FROM 2021)

ENGAGE. INSPIRE. EQUIP.

Libraries=Strong COMMUNITIES



We are so grateful for our 2022 community partnerships!

- 5 Healthy Towns Foundation
- Adult Learners Institute
- American Red Cross
- Astral Road Media
- Avila Childcare
- Ballet Chelsea
- Barn Sanctuary
- Brio Living Services/Chelsea Retirement Community
- Chelsea Area Friends for Recreation
- Chelsea ATA Martial Arts
- Chelsea Chamber of Commerce
- Chelsea Children's Cooperative Preschool
- Chelsea Community Fair
- Chelsea Community Foundation
- Chelsea Community Preschool
- Chelsea Education Foundation
- Chelsea Farmers Market
- Chelsea Garden Club
- Chelsea's One World One Family
- Chelsea Rotary Club
- Chelsea School District
- Chelsea Senior Center
- Chelsea State Bank
- Chelsea Village Flowers
- City of Chelsea
- Culver's of Chelsea
- Friends of Chelsea District Library
- Garden Mill
- Gerald E. Eddy Discovery Center
- Green Tree Pediatrics
- Happy Hooves Equine
- Kitty Face
- Kiwanis Club of Chelsea
- Independence Hall at Chelsea High School
- Lambs of Our Savior Preschool
- Mason Olive Lodge #156
- The Pines of Chelsea
- Purple Rose Theater Company
- Rick Taylor Real Estate
- Robin Hills Farm
- Secret Crisis Comics
- Serendipity Books
- Silver Maples
- Spad's Twisters
- St Louis Center
- Washtenaw County Broadband Task Force



GRANTS & DONATIONS

Chelsea District Library acknowledges the great importance of grants, private gifts, and donations to the library's future development and growth. We give special thanks to the following for their generosity.

Catherine Badgley	Robert Franklin Sr. & Family*	Daniel Medrow
Donald Baldwin	Friends of CDL	Angela Menegay
Colleen Bean	Dan & Barbara Fuller*	James & Anne Merkel*
Leigh Billings	Patricia Garcia	Gary & Jo Ann Munce
Kelly Bitters	Marjorie German	John J. Murphy
Bond & Company, PLC*	Paul Gottschalk	Judy Oake
Mary Jane Brown-Luckhardt*	Mary Green*	John & Lexa O'Brien*
Dave Budzinski	Green Tree Pediatrics	Melanie & Larry Odom-Groh
Janice L. Carr*	Catherine Guinan	James & Mary Randolph
Chelsea Community Foundation	Nancy & Dennis Hall*	Patricia Roberts
Chelsea Masonic Lodge (Olive Lodge #156)	Georgette Hansen	Beverly Royal
Chelsea Milling Company*	Tryntje Helfferich	David & Deborah Schaible
Chelsea School District	Daphne Hodder*	Elizabeth & Tony Sensoli
Chelsea State Bank	Jim & Deb Holefka*	Narcisa Silver & Teresa Bouchard*
Cobblestone Corners	Andrea Holmes*	Kathryn Sporer
Anne & John Colone*	Dana Hurst	Patricia Sweeny
Stacey Comfort	Daniel & Patricia Kaminsky	Robert Swistock
Mary Crockett	Kathleen Kersten	Sandra A. Szufnar
Richard Dice	Kiwanis Club of Chelsea	Sylvan Crooked Lake Association/Michael Madison*
Sally & Fred Dickinson	Cecilia Kloecker	Rick Taylor
Mark Drow	Virginia Krueger	Charlie Taylor
Luanne Dreyer Elliott*	Lori Kunkel-Coryell	T-Mobile
Erin Essenmacher	Michael Kunkel & Henry Cox	Denis Walker*
G. Timothy Flint	Susan Lackey	Nancy A. Whitelaw
Christine Forsch	Terri & Dan Lancaster*	Brittina Wiese
Andrew W Forsyth III	Jamie Lane	Jerry & Chris Wilczynski
	Kay Lantis	Your Telemus Family - Kana, Pauline, Adam & Lyle*
	Randall Lee	Chris Young Comic
	Jenny Lim-Lai*	Amy Zoran
	Thomas Matthews	
	David & Nancy McKinnon*	


*Donations made in memory of Jamie Bollinger, Leola Brennan, Mary Budzinski, Lew Green, Dudley Holmes, Meredith McSweeney Klaus, Ray Lutousky, Donna Rickert, Carol Reeves, Allyn Seitz, and Fritz Wagner






CHELSEA DISTRICT LIBRARY

ENGAGE. INSPIRE. EQUIP.

 221 S. Main St., Chelsea, MI 48118

 734-475-8732

 marketing@chelseadistrictlibrary.org

 ChelseaDistrictLibrary.org